

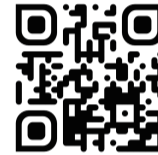
SAFETY INSTRUCTIONS:

- Warning:**
The symbol serves as a warning that the operation may involve dangerous voltage or pose a risk of harm to the human body.
- Note:**
The symbol serves as a reminder that the operation involves important procedures or repair instructions that require careful attention.
- Do not open the main body of the machine to re pair to adjust without permission.
 - Do not change the power line without permission, such as the damaged supply card. It should be repaired by the repairing department specified by the company so as to avoid danger.
 - Do not add any additive which is not produced by our company into the water used or the water tank of the humidifier.
 - The cleanser should be stored far from children.
 - Do not put the humidifier on the places within the reach of children.
 - Any alteration or modification to the humidifier may possibly bring inconvenience or harm to the users if it is not approved by our company.
 - If any unusual noise or odor occurs during operation, immediately turn off the humidifier and unplug it from the power source. If repairs are needed, have it serviced by a professional.
 - Before cleaning or adding water or moving the humidifier, please turn off the switch and Unplug the humidifier.
 - Unplug the humidifier when it is not in use.
 - During operation, do not touch the water in the sink or any internal components submerged in water with any part of your body.
 - Do not operate the humidifier if there is no water inside the sink.
 - Do not put and use the humidifier under too high temperature environment such as bath room,
 - Do not scrape the transducer with hard object.

5

- Do not clean the sink or transducer with any cleanser that is not manufactured or approved by our company.
- Do not make the water flow or splash into the interior part of the base so as to avoid damage to those parts.
- If the temperature is too low or the humidity is too high in the room, the spray can not be fully spread, then it is suggested to turn down the fog volume.
- Instead of being discarded carelessly, the humidifier should be properly dealt with after it is scrapped.
 - To ensure proper and safe operation of the humidifier, make sure it is placed in a suitable environment.
 - The humidifier should be placed on the flat and hard area to keep it stable and avoid the overflow of the water.
 - The humidifier should be placed in an area away from stoves, heat sources, and direct sunlight.
 - The humidifier should be placed in an environment with a normal temperature, avoiding cold environments to prevent damage to the unit.
 - The humidifier should be placed at a safe distance from furniture and home appliances to avoid direct exposure to mist, moisture buildup, or the accumulation of 'white dust' on their surfaces.

Scan the QR code for explanation video & multi language manuals. or go to www.humitec.shop and find your model number.



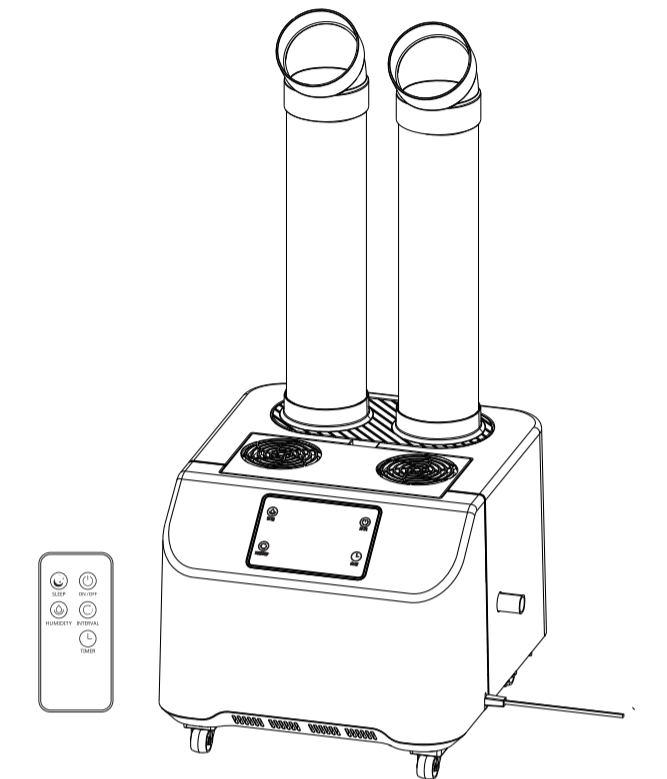
6

GENERAL TROUBLESHOOTING

DO NOT ATTEMPT TO REPAIR THE HUMIDIFIER BASE BY YOURSELF.		
Symptoms	Reason analysis	Solutions
Indicator light doesn't work	The plug is not connected properly	Connect the plug correctly, turn on the power
	Power board disconnects with connecting line.	Take off the base cover, and connect them correctly
	PCB is broken	Replace it with a new PCB.
Indicator light in red color	Lacking water	Add water
	The floater above the reed switch is blocked.	Twist the floater.
Indicator light in green color, no mist or small mist	The protective shell of the floating ball hasn't been taken off.	Take it off.
	Has scale on the surface of the atomize	Clean the atomizer
	Water is dirty or the water contains too much mineral substance	Replace it with clear water.
Leaking water from the gap between the water tank and base part.	The water is under low temperature	Using the water under 15-45°C
	Water tank is broken	Replace it with a new water tank
	Floating ball is broken	Replace it with a new floating ball
Leaking water from the bottom of the base part	Dirty floating ball or piston	Clean the floating ball and piston.
	The base part is broken	Replace it with a new atomization board
It has mist in base part, but couldn't run out.	The screw which is used to fix the atomization board is not tight enough	Replace it with a new atomization board
	Fan is broken	Replace it with a new fan
	Air inlet is blocked.	Take off the foam which is at the bottom of the base part
Abnormal smell	The strainer mesh has dust or water.	Clean the strainer mesh.
	New machine	Open the water tank and leave it open in a steady and cool place for 12 hours.
Abnormal sound	Dirty water or water stored in the machine for a long time	Clean the water tank and add clear water.
	Too much dust on the fan	Clean the fan or replace it with a new fan

humitec®

Industrial Humidifier 6L model: 2506



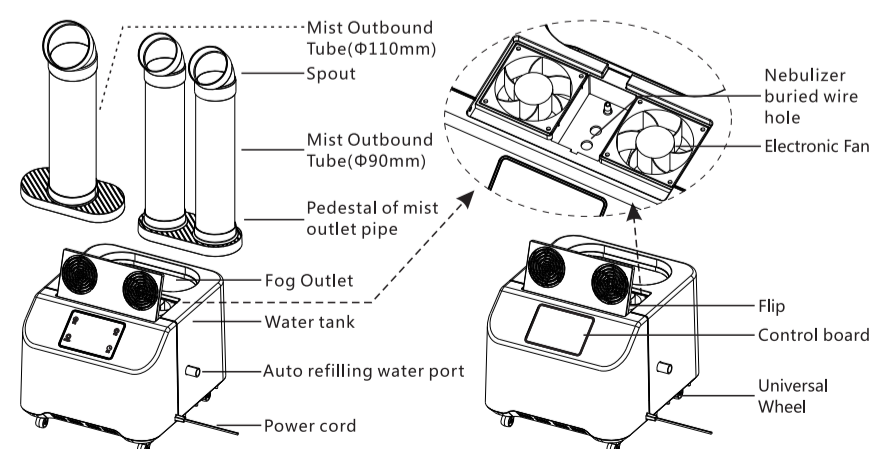
Technical Parameters

Product Model : 2506
Nominal Voltage: 220V-240V~
Nominal Frequency: 50Hz/60Hz
Noise: <60 dB(A)
Unit Size: 360x400x810MM
Rated Power Input: Six Atomizers 190W
Rated Humidification: Six Atomizers 6KG/H
Net/Gross Weight: Six Atomizers 7.30KG/8.80KG

Features of Ultrasonic Humidifier

- 1: Automatic protection for water shortage
- 2: Intelligent constant humidity
- 3: Intermittent Spray
- 4: Timing function
- 5: Universal Wheel
- 6: Connection to Watertap
- 7: Remote control (batteries not included)

Structure Diagram



1

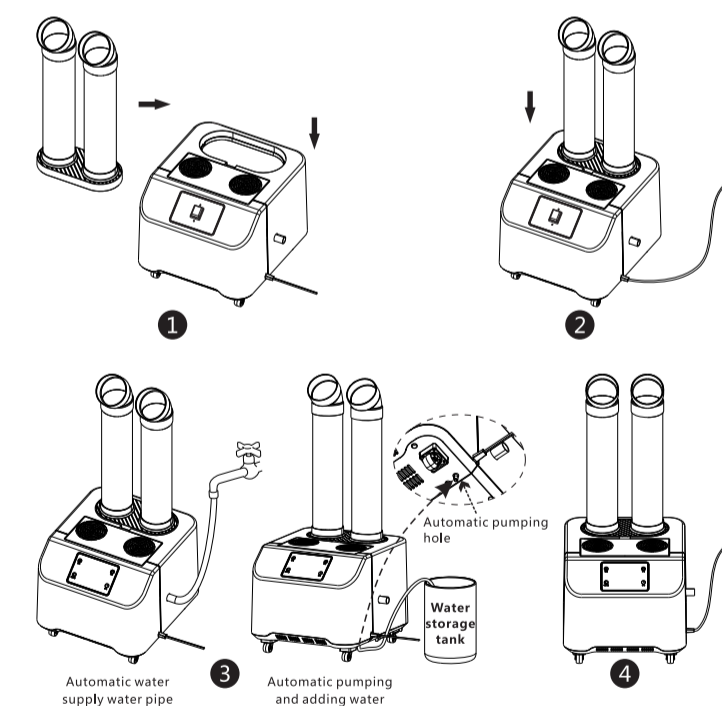
Functions of Intelligent Model

- Power:**
Alter plug ging in the power, the humidifier will enter the stand by mode. The stand by light will turn on. Now press the Power button one time to cancel the stand by indicator. The humidifier starts to work in high mode.
- Timer:**
Press this button to enter the timing setting, the time is 24 hours adjustment, 1- 24 hours.
- Mist Interval :**
Press the switch button for three seconds will enter the interval mode. Spraying for 1 minute; and stopping for 1 minute; spraying for 1 minute and stopping for 3 minutes; spraying for 1 minutes and stopping for 5 minutes.
- Humidity Level:**
Constant humidity button: Set humidity between 45% - 95%. user press this button until it reaches 95%, press one more time to cancel settings, Set a certain value and the humidifier will work automatically. When the humidity in the room is achieving this value, it will stop working until humidity getting lower.

Operating instructions

- 1: The humidifier should be placed for half an hour under moderate and good environmental temperature if it is used for the first time. The water should be prevented from flowing into the wind intake net during the usage.
- 2: When the humidifier is not used for long time, the water tank and sink should be cleaned before using. When cleaning the fan, it should be absolutely free from water.

2



Instructions for adding water

- Smart version:**
 3. Can be connected to the water pipe automatic adding water and pump automatic adding water two ways.
 4. After the user has arranged the water adding device, plug in the power supply and touch the switch to start working.

3

Daily Maintenance

In some places, the water has hard quality with relative higher calcium and magnesium ion content. In addition, some places use bleaching powder as the cleanser.

During the usage of the humidifier, some part of calcium and magnesium ion will be sprayed out with he water mist which spread onto the surface of objects and floor. After drying, it forms the rmonatrite just like "white powder" and part of them precipitates on The surface of atomizer plate and sink to form scale. It is caused by the impurity of the water quality. The scale formed on surface of the atomizer plate will affect the working effect of the humidifier.

How to keep the humidifier clean

It is recommended to clean the atomizer plate water tank, the scale of the base and air-intake net when using the humidifier. Constantly change the old water in the tank to keep the humidifier clean. Do not store water inside the water tank and sink if it is not used for long time.

When it is stored, all the parts should be cleaned, wiped off and free from water before it is put into the original packing box.

How to clean the atomizer sheet base

After diluting the cleanser, put into the base add the temperature of 45 degree to completely dilute the cleanser. After soaking for ten minutes, use the small brush to clean the surf ace of transducer until the scale is completely removed. The 1:1 proportion of water and white vinegar or citric acid to clean the base; Then use the water to clean the surface of base and transducer.

4