

Safety Guidelines

Warning: The symbol is a reminder to users that the operation may cause dangerous voltage or harm to the human body.
Note: The symbol is a reminder to users that the operation is an important procedure or repair instruction.

- ⚠ Do not open the main part of the machine to repair or adjust without permission.
 - ⚠ Do not replace the power cord without permission, for example if the cord is damaged. It should be repaired by the repair department designated by the company to avoid danger.
 - ⚠ Do not add any additives that are not produced by our company into the water used in the water tank of the humidifier.
 - ⚠ The cleanser must be kept out of the reach of children.
 - ⚠ Do not place the humidifier in locations that are within the reach of children.
 - ⚠ Any modification or alteration to the humidifier may cause inconvenience or harm to users if it is not approved by our company.
 - ⚠ If any abnormal noise or strange smell occurs during operation, turn off the humidifier immediately and unplug it. Have it repaired by a professional repair service if needed.
 - ⚠ Before cleaning, adding water or moving the humidifier, turn off the switch and unplug it.
 - ⚠ Unplug the unit when the humidifier is not in use.
 - ⚠ During operation, do not touch the water in the sink or any parts inside the water with any part of your body.
 - ⚠ Do not operate the humidifier if there is no water in the sink.
 - ⚠ Do not place or use the humidifier in a high-temperature environment such as a bathroom.
 - ⚠ Do not scrape the transducer with a hard object.
 - ⚠ Do not clean the sink or transducer with a cleanser that is not produced or approved by our company.
 - ⚠ Do not let water flow or splash into the interior part of the base to avoid damage to the parts.
 - ⚠ If the temperature is too low or the humidity is too high in the room, the mist cannot spread fully; it is recommended to turn down the mist volume.
 - ⚠ Instead of discarding the humidifier carelessly, it should be properly disposed of after it is scrapped.
- To ensure the humidifier can operate normally without accidents, pay close attention to the environment in which it is placed.
 - The humidifier should be placed on a flat and hard surface to keep it stable and prevent overflow of water.
 - The humidifier should be placed in an area far from the stove and heat sources, as well as away from direct sunlight.
 - The humidifier should be placed in an environment with a normal temperature instead of a cold environment to avoid damage to the humidifier.
 - The humidifier should be kept far away from furniture and household appliances to avoid direct spray of mist as well as moisture or attachment of "white powder" on their surfaces.

4

Common issues and troubleshooting

Instructions of Top Adding Water Type Pump: Common Faults and Troubleshooting		
Fault phenomenon	Cause analysis	Exclusion methods
Indicator light is off	Power is switched off	Connect the power and turn on the switch
	Wire Disconnection of Power Board (New machine)	Open the base cover and plug in the wire
	Circuit board burned	Replace circuit board
The indicator light is red	No water in the tank	Add water into the tank
	Float ring in the sink fails to float and get stuck	Move the float ring by a toothpick
	Failure to pump the water due to the inoperation of the pump	Replace it with a new pump
Display screen can work normally, but no mist or small mist	Scale on atomizer sheet	Clean the atomizer sheet
	Dirty water or too much alkaline mineral substance in water	Replace it with clear water
	Low water temperature	Recommended water temperature for 15-40 degree
Leakage from gap between the base and tank	Water tank is broken	Replace the water tank
Leakage from the bottom of the sink	Sink is broken	Replace the base
	Loose screw on atomizer sheet	Replace the atomizer sheet
	Broken fan	Replace the fan
Failure in the blowing out of mist from the base	Blocked air intake	Remove foam from the base
	Dust on Air intake filter screen or water drop on the wet filter screen	Clean the filter screen
	Smell spray	New machine
Abnormal noise	Dirty water or water stored for a long time	Clean the tank and replace the water with clear water
	Aging fan due to too much dust	Replace the fan

Scan the QR code for multi language manuals.

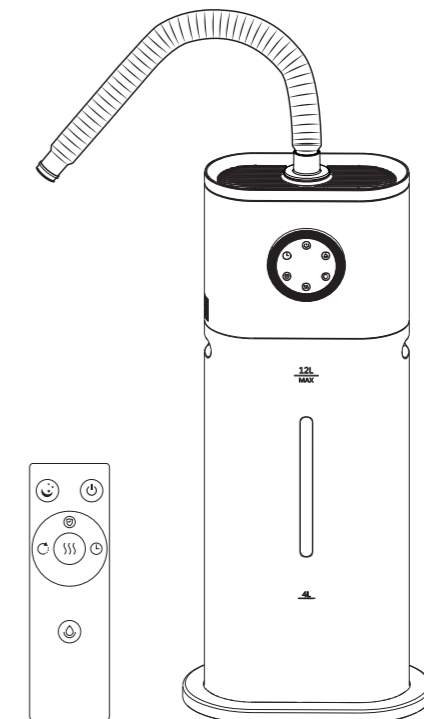
or go to www.humitec.shop and find your model number.



5

ht
humitec®

Ultrasonic Humidifier 12L
 model: 2502



Function Introduction

■ Random items are subject to the distribution of different versions.

Name	Product	User Manual
Quantity	1 Piece	1

■ Technical parameters

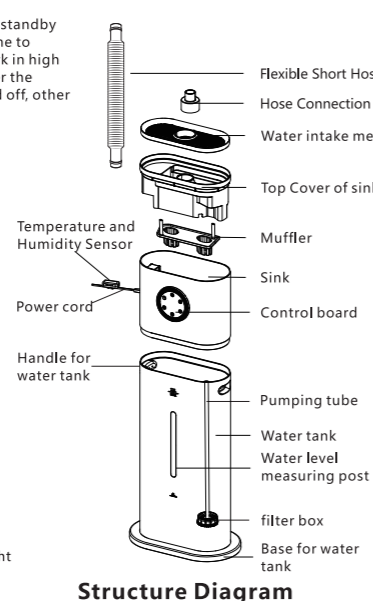
- Product Model: 2502
- Nominal Voltage: 100V-240V~
- Nominal Frequency: 50Hz/60Hz
- Rated Power Input: 70W
- Rated Humidification: 800 ml/h
- Tank Capacity: 12 L
- Noise: ≤35 dB(A)
- Net/Gross Weight: 3.15 kg / 4.15 kg
- Unit Dimensions: 310 mm × 180 mm × 1140 mm

■ Features of the Ultrasonic Humidifier

- Automatic protection for water shortage
- Intelligent constant humidity
- One-click sleep function
- Top-fill water design
- Mist regulation function
- Timing function
- UV lamp
- Intermittent spray
- Remote control (batteries not included)

■ Functions of Intelligent Model

- ON/OFF/SLEEP: After plugging in the power, the humidifier will enter the standby mode. The standby light will turn on. Now press it one time to cancel the standby indicator. The humidifier starts to work in high mode. Press the switch button for three seconds will enter the sleeping mode. The indicator on the screen will be turned off, other functions are working as normal.
- TIMER: Press this button to enter the timing setting, the time is 16 hours adjustment, 1-16 hours.
- MIST: Mist adjustable button can change the mist volume from 1 to 3 levels circularly.
- HUMIDITY: Constant humidity button: set humidity between 45%-95%. user press this button until it reaches 95%. press one more time to cancel settings. Set a certain value and the humidifier will work automatically, when the humidity in the room is achieving this value, it will stop working until humidity getting lower.
- INTERVAL: It has several options: continuously spraying; spraying for 1 minute; and stopping for 1 minute; spraying for 1 minute and stopping for 3 minutes; spraying for 1 minutes and stopping for 5 minutes.
- UV LAMP: Touch the button to turn on UV sterilization and color light to work both at same time; and the color light is blue.



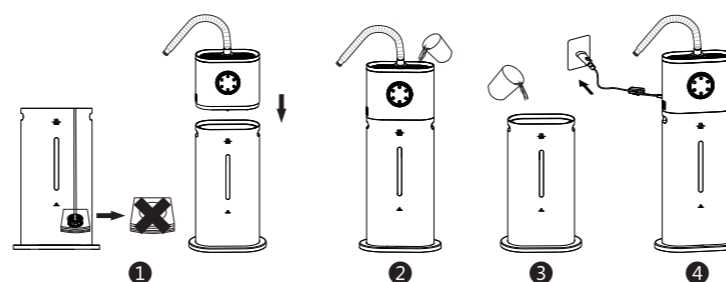
1

Instructions for Use

- The humidifier should be placed for half an hour in a moderate and good ambient temperature when used for the first time. During use, make sure no water enters the air intake vent.
- If the humidifier hasn't been used for a long time, the water tank and base should be cleaned before use. When cleaning the fan, ensure it is completely free of water so that none enters the humidifier.

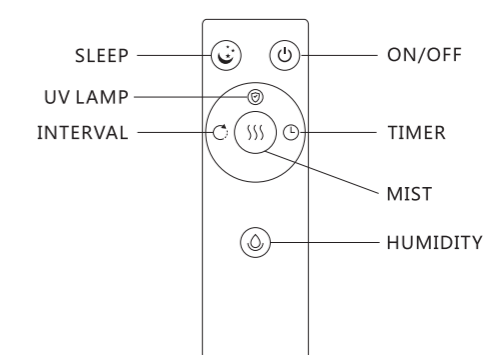
Working Principle of a Pump Humidifier

- Unpack the product and open the water tank. Remove the sponge block containing the pump tube, then place the humidifier back onto the water tank.
- Pour water into the inlet on the top of the humidifier. Once full, the water will flow automatically into the tank. Meanwhile, the float with the built-in sensor will rise and connect to the pump tube. Switch the power on, and the device will start working. The pump will stop pumping water until the pump tube sends a low-water signal. When such a signal is detected, the pump will start refilling.
- If the user directly pours water into the tank (without water in the upper tray) and plugs in the power, it is not necessary to turn on the device. The pump will automatically start refilling. After about 1 minute and 20 seconds, the tank will be full, the pump tube will connect, and the device will begin atomizing. If you turn on the device without enough water, the display will light up, but no mist will be produced because the pump tube hasn't been connected yet.
- Connect the power and press the ON/OFF button (do not turn on the device when there's no water inside). The humidifier will start atomizing at the highest level. Use the mist button to adjust the mist output.



2

Introduction of Remote Control



Daily Maintenance

In some areas, the water is hard and contains relatively high levels of calcium and magnesium ions. Additionally, some regions use bleach as a cleaning agent. During use, calcium and magnesium ions may be released with the mist and settle on surfaces such as furniture and floors. Once dried, this can form a "white powder," and some of it may precipitate on the surface of the atomizer plate and the base, creating scale buildup. This is caused by water impurities. The scale on the atomizer plate can reduce the humidifier's effectiveness.

How to Keep the Humidifier Clean

It is recommended to clean the atomizer plate, water tank, the base scale, and the air intake mesh regularly when using the humidifier. Frequently replace the water in the tank to keep it clean. Do not leave water in the tank or base if the unit will not be used for a long time. Before storing the device, make sure all parts are cleaned, dried, and free from water, then place them back in the original packaging.

How to Clean the Atomizer Plate in the Base

After diluting the cleanser, pour it into the base and add water at a temperature of 45 °C to fully dissolve the detergent. Let it soak for 10 minutes, then gently scrub the surface of the atomizer with a small brush until the scale is completely removed.

Use a 1:1 solution of water and white vinegar or citric acid to clean the base. Then rinse the base and the atomizer surface thoroughly with water.

3